

# Infiltrator IM-Tank Handling Guidance



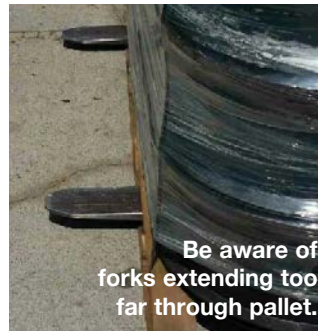
Forklift too short.



Forklift forks extend completely through the pallet.

## OFF LOADING IM-TANK PALLETS

- For proper handling of all the IM-Tank pallets be sure to use appropriately rated equipment. For complete specifications on forklift requirements please reference the Infiltrator IM-Series Septic Tank Assembly Instructions. The forks must extend completely through the pallet to support the entire pallet width. Fork extensions are recommended if forks cannot span the width of the pallet. By not supporting the entire pallet width there is a risk that the pallet will break causing the tanks to fall putting assembly staff in danger and could damage product.



## AVOIDING PRODUCT DAMAGE

- Use caution when off loading Infiltrator pallets to not damage adjacent pallets with the forks extending through the pallets. When re-shipping unassembled tanks they must be packaged on Infiltrator tank pallets to avoid the possibility of damage. When restacking unassembled tanks for delivery do not let the tank flange rest on the pallet furring strips.

## DE-STACKING PALLETS

- A minimum 12' (3.7 m) pick height is required for the forklift when destacking a tank pallet. To safely remove the tank halves from the pallet the Infiltrator Lifting Strap Assembly must be used. The Infiltrator Lifting Strap Assembly is sized to pick up a maximum of 2 IM-1530 tank halves, 4 IM-1060 tank halves and 6 IM-540 tank halves at a time using a forklift. The safety lock spring hooks are to be connected to the rope handles on the end walls of each tank. The IM-Tank Lifting Strap Assembly is designed for use on all three IM-Tank models. It is important to adjust the strap length to the appropriate tank model. The straps are designed to attach to the rope handles at each end of the tank. It is critical that the forklift be positioned to pick the tank halves lifting straight up not allowing the tank halves to bind-up on the tanks below. A potential solution to binding tanks is to free them manually using a pole.
- When picking the tanks, maneuver the forklift to be facing the pallet evenly and make the straps lift the tank halves as evenly as possible off the pallet. If a tank half is lifted unevenly from the pallet it can bind-up on the tank half below and cause damage. If the tanks are showing signs of binding-up lower them back down and re-adjust (do not use excessive force as this could cause tank breakage).



## ASSEMBLY

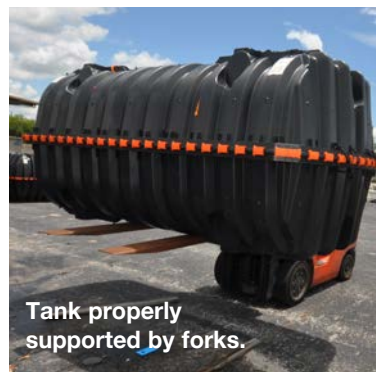
- Tank Quality Issues to be aware of:
  - Flashing is an issue prevalent in molded plastic parts. It is caused when a mold does not or cannot remain closed during the molding process creating a small sliver of plastic that requires trimming as a secondary step. We have a quality procedure to ensure that our flash is



trimmed at our manufacturing plant. There can be rare instances where flashing is missed in the process. Any visible flash can interfere with the attachment of the clips at the mid-seam. If flash is observed at the midseam it can be easily removed using a standard utility knife. Be careful not to cut the gasket.

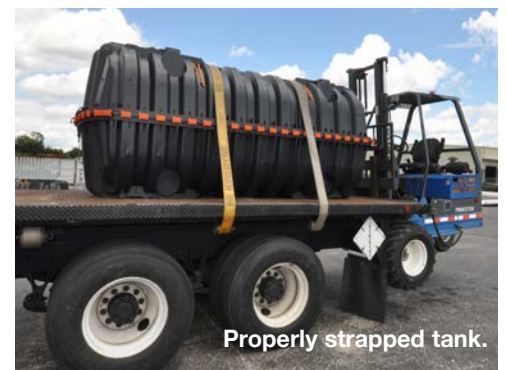
2. Uneven gasket installation can also make assembling the tanks a challenge. If the gasket does not have a level appearance during the assembly please take steps properly seat the gasket into the receiving channel. This can be accomplished by hand or using a rubber mallet.

3. If the outer rail of the mid-seam shows any sign of damage or appears to be warped please set the tank top and bottom half aside and contact your local Infiltrator representative for an inspection. If they determine the tank can be assembled properly they will assist your staff in the process and if not they will work with you to determine a resolution.



## INVENTORY IN YARD

When storing assembled tanks in the distribution yard, establish a location that will not be at risk of damage caused by forklift traffic. It is helpful to set assembled tanks on dunnage to prevent damage from forks when picking them up. Infiltrator does not recommend stacking tanks in the yard as they can easily blow over due to size and weight. If stacking tanks in a storage yard is unavoidable, they must be secured and supported by dunnage between the tanks. When handling tanks with a forklift be sure the forks are long enough to support the entire width of the tank. A tank will not resist the full force of a forklift and will be punctured.



## LOADING DIST. TRUCK/TRANSPORT/UNLOAD

### • Best Practices

1. Do not stack tanks for fear that the stacked tanks will fall
2. When securing a tank, strap the tank properly on the truck using two straps across the strapping locations. Tanks must be shipped upright and securely strapped in place.
3. Inspect the truck bed to be free of nails and disruptions to prevent tank damage.
4. When unloading a tank do not push it off the bed of a truck. The tank should be lifted off the bed of a truck using a forklift or excavation equipment. If neither are available then sliding a tank in a controlled fashion, off a truckbed using a set of ramps (boards) is acceptable.



Contact Infiltrator Water Technologies' Technical Services Department for assistance at 1-800-221-4436